

# play

# all

# day

SCHOOL

CITY PARK

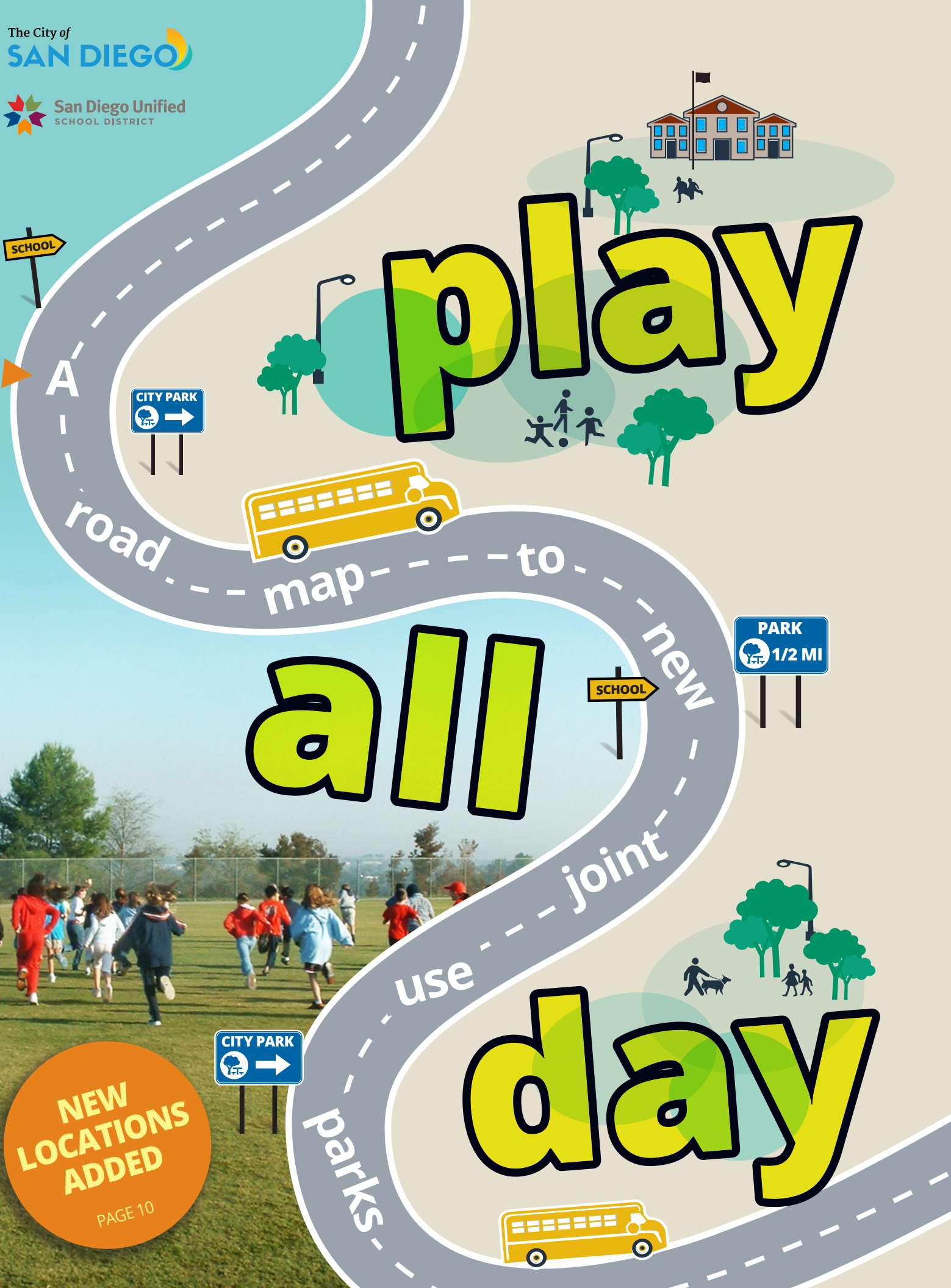
PARK  
1/2 MI

SCHOOL

CITY PARK

**NEW  
LOCATIONS  
ADDED**

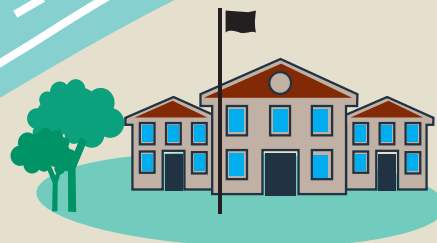
PAGE 10





# play all day PARKS PROGRAM

The Play All Day Parks Program is a new initiative put forth by the City of San Diego Mayor's Office and the Superintendent of the San Diego Unified School District in 2016 to break ground on over 45 new joint-use park sites in the next 5-10 years.



## VISION

To create public recreation opportunities in San Diego neighborhoods through a joint-use partnership between the San Diego Unified School District and the City of San Diego.

Over  
45 new  
joint-use  
park sites



## CITY AND SCHOOLS WORKING TOGETHER

The commitment to build over 45 new joint-use parks is an ambitious goal made possible by strong collaboration between the City of San Diego and San Diego Unified to expand recreational opportunities. The initiative strengthens the long-standing partnership between the City and San Diego Unified to maximize shared use of public facilities and resources for educational and community use. The new park facilities will be opened on existing school sites and constructed with both the City and Propositions S and Z bond funding. The City will commit to operate and maintain the new park facilities.



## PURPOSE

Creative and innovative measures like the Play All Day partnership are essential in order to expand the current park and recreation system.

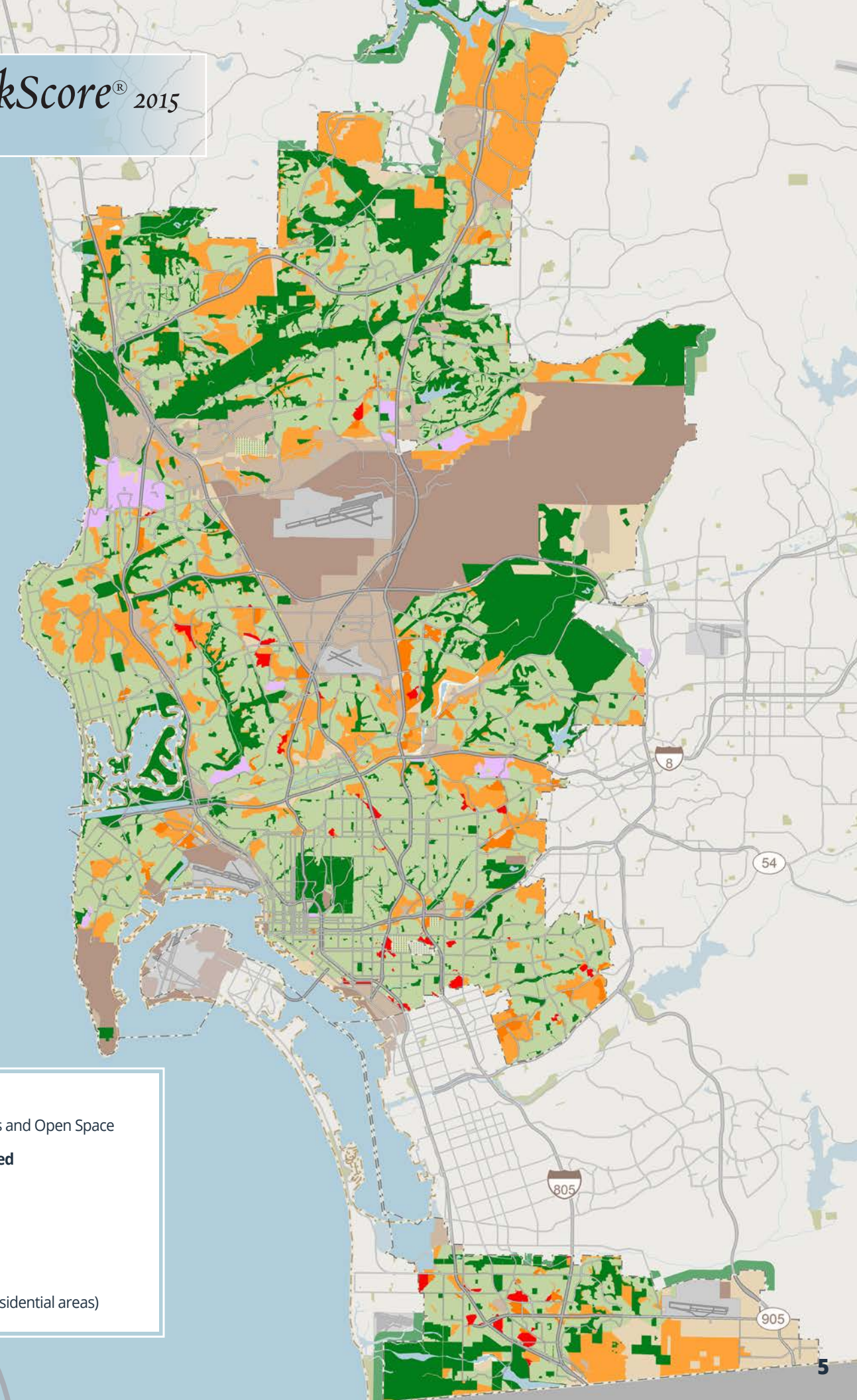
The City of San Diego has an extensive park system with over 41,000 acres of parkland, and is home to some of the largest and most unique parks in the country. Millions of residents and tourists visit our parks each year.

Research shows that people receive the most benefit from local parks and open space that are in close proximity to their homes. According to the Trust for Public Land, 23% of the population in San Diego currently live further than a 10-minute walk to a park or recreational facility.

Walkable parks and open space strengthen our communities, improve physical and psychological health, and make communities and neighborhoods more attractive places to live and work. One of the biggest challenges San Diego faces in building new parks is the limited amount of available land.



THE TRUST FOR PUBLIC LAND  
**ParkScore**® 2015



**LEGEND**

- Current Parks and Open Space
- Level of Park Need**
- Very High
- High
- Moderate
- Low/Fulfilled
- Other (Nonresidential areas)

**23% of San Diego residents currently live further than 10-minute walk to a park or green space.**





## BENEFITS

Designating school sites for community recreational use during non-school hours increases access to recreational opportunities.

Schools are the center point of the communities that surround them. Children participate in physical education and recreational activities in school yards during school hours, but there are opportunities for community use when school isn't in session.

Agencies and governments across the country are identifying joint-use school sites as opportunities in our communities. The benefits include:

### Provide a place for physical activity

Strong evidence shows that when people have nearby access to parks, they exercise more. Regular **physical activity** has been shown to increase health and reduce the risk of a wide range of diseases, including heart disease, hypertension, colon cancer and diabetes. Physical activity also relieves symptoms of depression and anxiety, improves moods, and enhances psychological well-being.



The more children are active, the healthier they will be now and when they grow up.



### Provide environmental benefits

Trees and other vegetation in parks reduce air and water pollution, help keep cities cooler and are a cost-effective way to manage storm water runoff. **Environmental benefits** include ground water recharge areas, storm water protection, reductions in heat island effects, and increased carbon uptake from trees and vegetation. Turf fields allow for water recharge into native soils and can provide a filtering effect for storm water pollutants.

### Produce opportunities for social and community interactions.

Parks produce important **social and community benefits**. They make urban neighborhoods more livable, offer recreational opportunities for at-risk youth, children and families, and provide places in neighborhoods where people can feel a sense of community. Access to public parks and recreational facilities has been strongly linked to reductions in crime and, in particular, to reduced juvenile delinquency.





## WHAT IS JOINT-USE?

Joint-use is when school property is utilized for public use when school is not in session. Currently, San Diego maintains 76 joint-use facilities in partnership with San Diego Unified School District and there are over 45 joint-use parks planned for the future.

The City of San Diego and San Diego Unified entered into their first joint-use agreement in 1948.

The Play All Day joint-use parks will include a turfed multi-purpose field and a walking track. Most of the joint-use parks will also include paved hardcourts, playground equipment, off-street parking or a combination of these amenities. Each school site is unique and has different constraints and opportunities.

**In 1948  
the first  
joint-use park  
in San Diego  
was  
established.**

## FUNDING OPPORTUNITIES

Propositions S and Z, approved by San Diego voters in 2012, are San Diego Unified bond measures that created funding for capital improvement projects to repair, renovate and revitalize school sites. The District is using a portion of these funds to construct new turf fields at school sites that do not already have turf fields. At the present time, the City has a unique opportunity to partner with the District to produce joint-use facilities utilizing Proposition S and Z funds.

The City utilizes Development Impact Fees (DIF) collected in specific communities to fund the design and construction of the City-led joint-use projects.

In all cases, the City will provide maintenance and will operate the joint-use facilities during non-school hours.



**The City  
is partnering  
with San Diego  
Unified to use  
Prop Z funds  
to develop  
joint-use  
fields.**



## GUIDING PRINCIPLES FOR PARK SELECTION

The determination to jointly use the selected school sites were made in partnership with the school district. A number of factors were evaluated based on the specific merits of each site. The following guiding principles were taken into account in the selection of the Play All Day joint-use park sites:

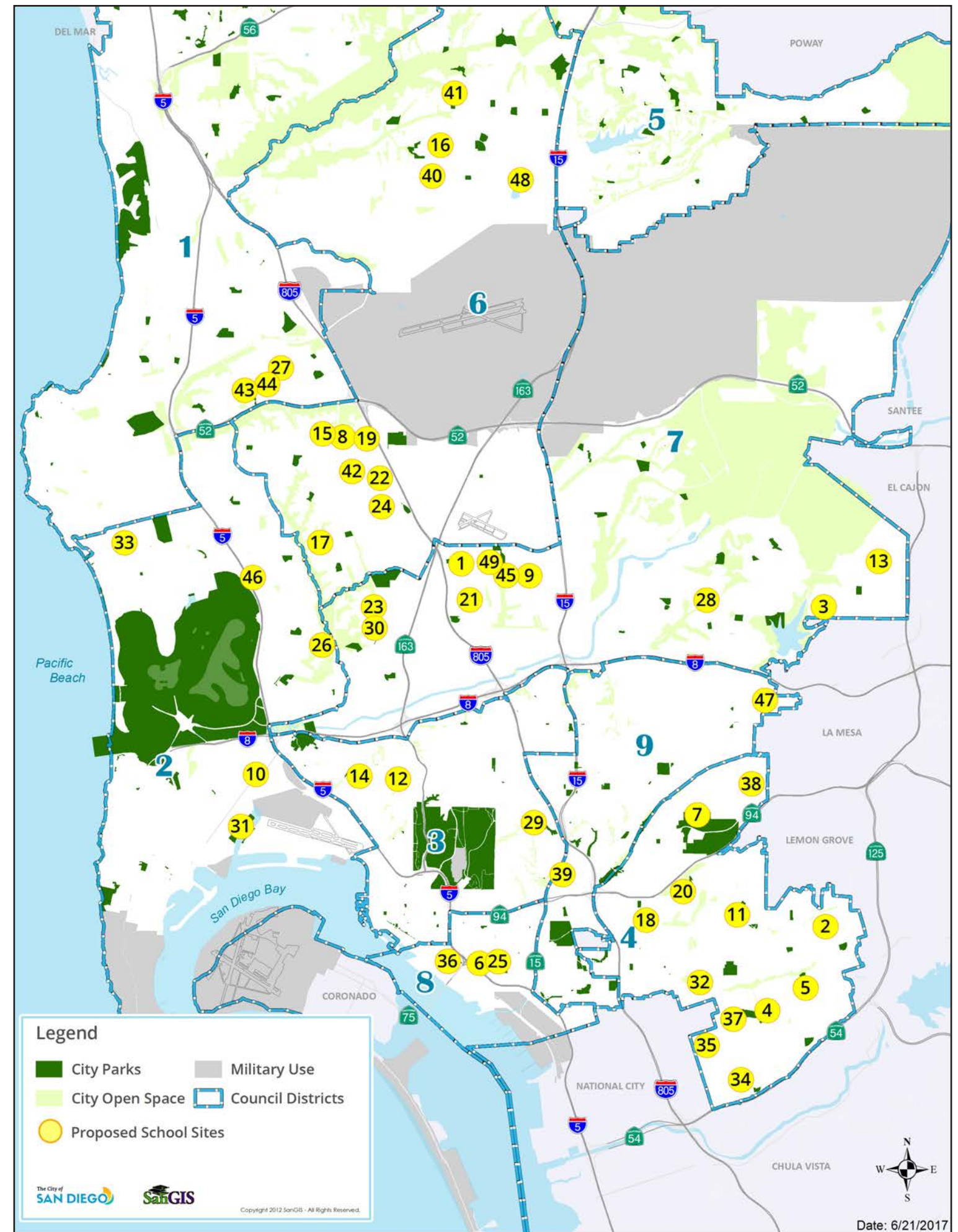
- **Pre-identified for school district funding**
- **On the school district's schedule for implementation**
- **Identified in the Community Plan or Facilities Finance Plan as a future joint-use park**
- **Located in park-deficient communities**





# PROPOSED PLAY ALL DAY PARK SITES

- |    |                                 |    |                                 |    |                           |
|----|---------------------------------|----|---------------------------------|----|---------------------------|
| 1  | Angier Elementary               | 18 | Horton Elementary               | 35 | Paradise Hills Elementary |
| 2  | Audubon Elementary              | 19 | Innovation Middle               | 36 | Perkins Elementary        |
| 3  | Benchley/ Weinberger Elementary | 20 | Johnson Elementary              | 37 | Perry Elementary          |
| 4  | Bethune K-8                     | 21 | Jones Elementary                | 38 | Rolando Park Elementary   |
| 5  | Boone Elementary                | 22 | Lafayette Elementary            | 39 | Rowan Elementary          |
| 6  | Burbank Elementary              | 23 | Linda Vista Elementary          | 40 | Salk Elementary           |
| 7  | Carver Elementary               | 24 | Lindbergh-Schweitzer Elementary | 41 | Sandburg Elementary       |
| 8  | CPMA Middle                     | 25 | Logan/Memorial K-12             | 42 | Sequoia Elementary        |
| 9  | Cubberley Elementary            | 26 | Longfellow Elementary           | 43 | Spreckels Elementary      |
| 10 | Dewey Elementary                | 27 | Marie Curie Elementary          | 44 | Standley Middle           |
| 11 | Encanto Elementary              | 28 | Marvin Elementary               | 45 | Taft Middle               |
| 12 | Florence Elementary             | 29 | McKinley Elementary             | 46 | Toler Elementary          |
| 13 | Gage Elementary                 | 30 | Montgomery Middle               | 47 | Tubman Charter            |
| 14 | Grant K-8                       | 31 | NTC Pool                        | 48 | Wangenheim Middle         |
| 15 | Hawthorne Elementary            | 32 | Nye Elementary                  | 49 | Wegeforth Elementary      |
| 16 | Hickman Elementary              | 33 | Pacific Beach Elementary        |    |                           |
| 17 | Holmes Elementary               | 34 | Pacific View Elementary         |    |                           |





# CONCLUSION

With a partnership between the City and San Diego Unified, San Diego can maximize public resources, employ efficient land-use strategies, and rapidly increase the amount of park land available for public use and enjoyment.

Joint-use agreements are a win-win-win opportunity for all. San Diego Unified retains the land and receives assistance maintaining their joint-use sites, the City secures additional park land and park sites, and the public has better access and more opportunity to enjoy and participate in recreational opportunities in their neighborhoods.

Working together, we can provide a place for physical activity, increase the value of neighborhood residential property, provide environmental benefits, and create places where community members can develop social ties, share experiences, and build community bonds.



**Joint-use agreements are a win-win-win opportunity for all.**

WE THANK YOU FOR THE FIELD

